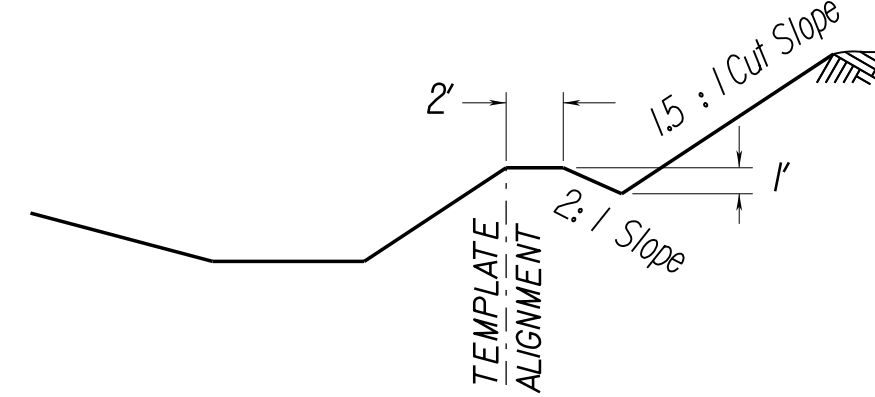


BRISTOL DISTRICT DESIGN UNIT

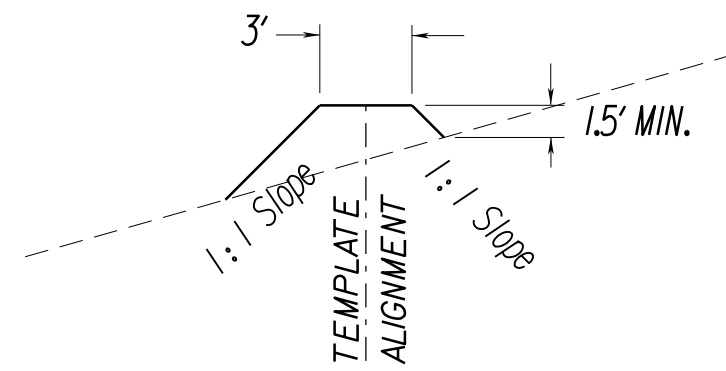
PROJECT MANAGER James Bullins 276-696-3349
 SURVEYED BY, DATE Woody McCowan 276-525-6483, June 2018
 DESIGN BY James Bullins 276-696-3349
 SUBSURFACE UTILITY BY, DATE n/a

ADDITIONAL EASEMENTS FOR UTILITY RELOCATIONS MAY BE REQUIRED BEYOND THE PROPOSED RIGHT-OF-WAY SHOWN ON THESE PLANS.

SLOPE DITCH DETAIL
 STA. 103+67 TO STA. 106+50
 SEE CROSS SECTIONS FOR OFFSETS & ELEVATIONS



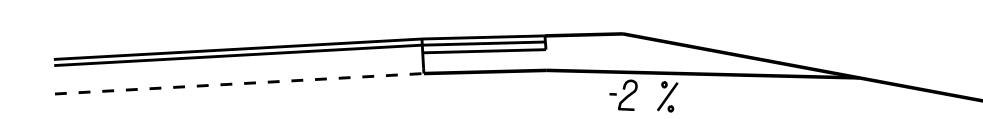
BERM DITCH DETAIL
 STA. 102+67 TO STA. 103+67
 SEE CROSS SECTIONS FOR OFFSETS & ELEVATIONS



PUBLIC HEARING PLANS

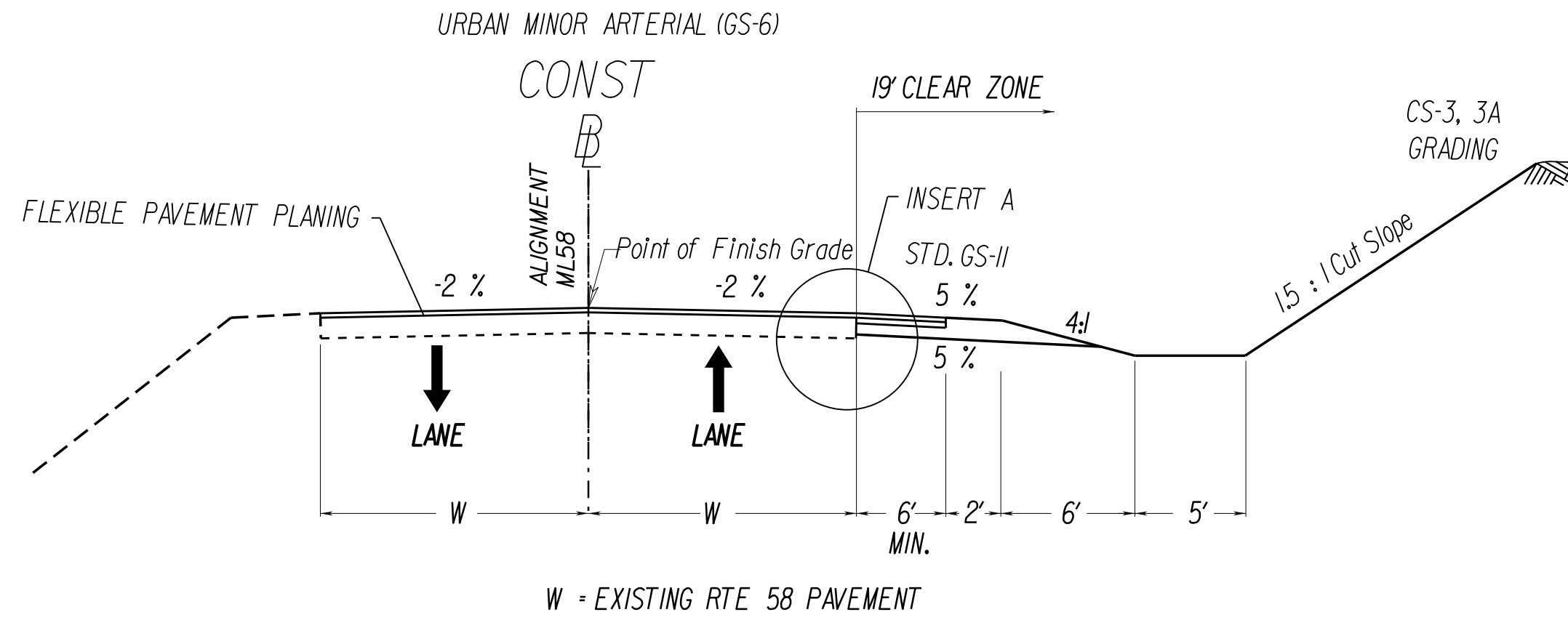
THESE PLANS ARE UNFINISHED AND UNAPPROVED AND ARE NOT TO BE USED FOR ANY TYPE OF CONSTRUCTION OR THE ACQUISITION OF RIGHT OF WAY.

SHOULDER GRADING TO PREVENT WATER BEING CARRIED UNDER PAVEMENT



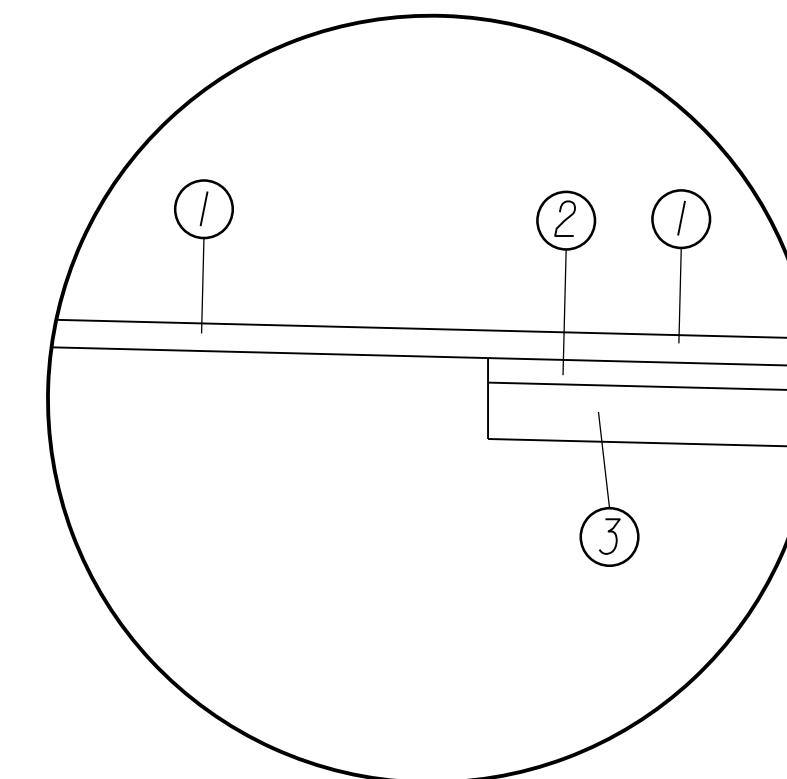
HIGH SIDE SUPERELEVATED CURVE DETAIL

Note: Grade Subsurface Courses on a minus 1/4" : 1' slope from edge of pavement.



TYPICAL SECTION

STATION	TO	STATION	REMARKS
100+82.23		102+38.00	TRANSITION
102+38.00		112+54.63	RTE 58
112+54.63		115+23.67	TRANSITION



INSERT A

- ① SURFACE ASPHALT CONCRETE TYPE SM-12.5E @ 220 LBS. PER SQ. YD.
- ② BASE 4" ASPHALT CONCRETE BASE COURSE BM-25.0A
- ③ SUBBASE 6" & VARIABLE AGGREGATE BASE MATERIAL TYPE I NO. 21-B (Subbase Daylight through shoulder)

PRIVATE AND COMMERCIAL ENTRANCES

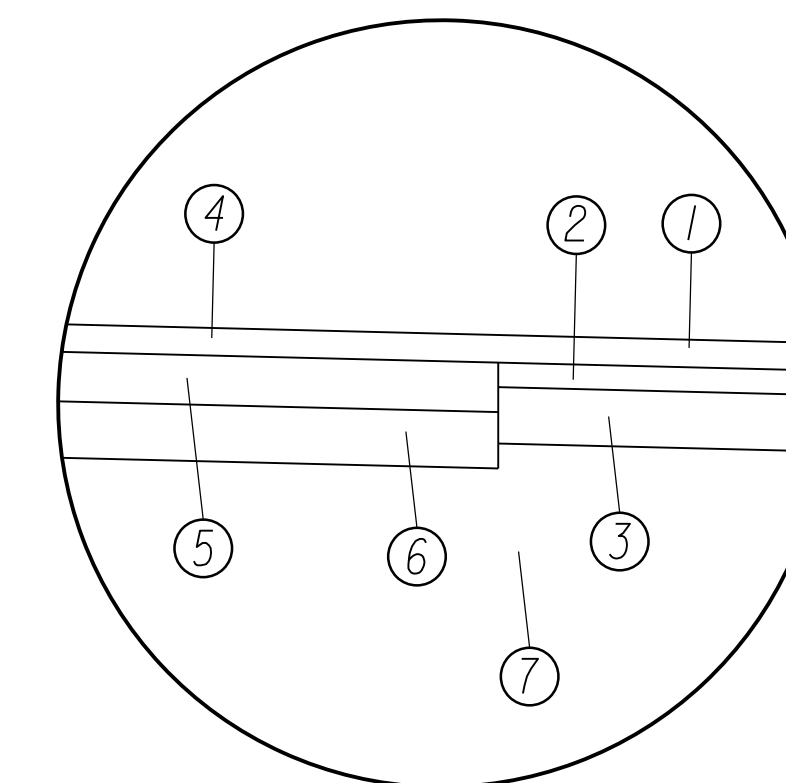
TYPE I
Crusher Run Aggr.
6" Crusher Run Aggr. 25 or 26

The type of entrance (I, III, IV) to be constructed will be determined by the existing condition at the time of construction.

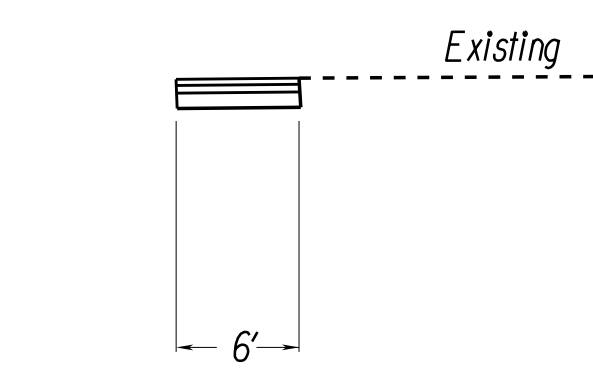
TYPE III
Asphalt
Asphalt Conc. Type SM-12.5E @ 220 Lbs. per S. Y.
4" Aggr. Base Mat'l. Ty. I No. 21A or 21B

TYPE IV
Asphalt Commercial
Asphalt Conc. Type SM-12.5E @ 165 Lbs. per S. Y.
4" Asphalt Conc. Base Course BM-25.0
6" Aggr. Base Mat'l. Ty. I No. 21A or 21B

INSERT FOR PROPOSED PIPES CROSSING RTE 58

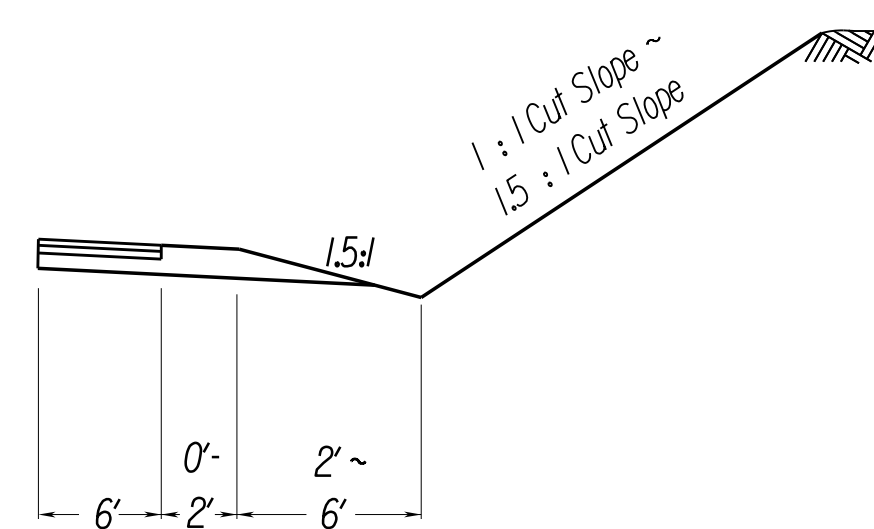


- ① SURFACE ASPHALT CONCRETE TYPE SM-12.5E @ 220 LBS. PER SQ. YD.
- ② BASE 4" ASPHALT CONCRETE BASE COURSE BM-25.0A
- ③ SUBBASE 6" & VARIABLE AGGREGATE BASE MATERIAL TYPE I NO. 21-B (Subbase Daylight through shoulder)
- ④ SURFACE ASPHALT CONCRETE TYPE SM-12.5E @ 220 LBS. PER SQ. YD.
- ⑤ BASE 8" ASPHALT CONCRETE BASE COURSE BM-25.0A
- ⑥ SUBBASE 6" AGGREGATE BASE MATERIAL TYPE I NO. 21-B (Subbase)
- ⑦ BACKFILL BEDDING AGGR. MATL. 25 OR 26 BACKFILL OVER PIPES

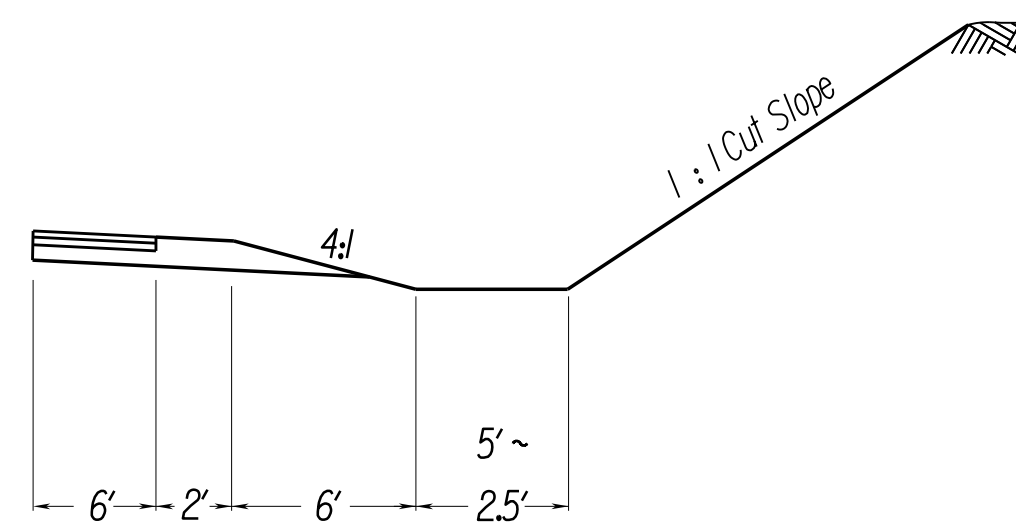


STA. 100+87 TO STA. 101+35
TRANSITION TO EXISTING ENTRANCE

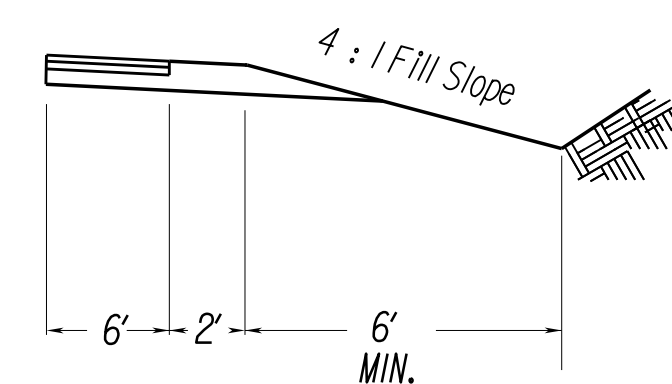
TRANSITION DITCH DETAILS
 SEE CROSS SECTIONS FOR OFFSETS & ELEVATIONS



STA. 101+35 TO STA. 102+38
TRANSITION TO EXISTING ROADWAY



STA. 112+63 TO STA. 113+13
TRANSITION TO EXISTING ROADWAY



STA. 113+13 TO STA. 115+23.67
TRANSITION TO EXISTING ROADWAY